



Acando – Your Partner

Acando is a consultancy company that in partnership with its clients identifies and implements sustainable business improvements through information enabled by technology. Acando provides a balance of high business value, short project times and low total cost. Acando's annual turnover is about EUR 160 million and the Group employs approximately 1,100 professionals in six European countries. Acando is listed at NASDAQ OMX Nordic. Acando's corporate culture is based on three core values: Team spirit, Passion and Results.

MASDAC – an authoring system for production of maintenance documents

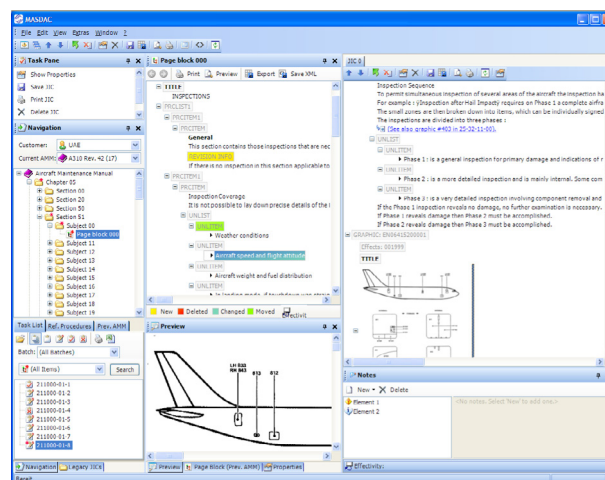
Challenges & Benefits

Airbus generates maintenance documents - known as job cards - for its customers specifically tailored to the needs of the individual airline. This is done on the basis of the aircraft maintenance manual (AMM) for the aircraft in question. For freight aircraft such as the A310 the production process is a very time-consuming and costly process as the job card comprises several different AMM sections.

However, this task can now be completed a good deal more easily and efficiently using the new Maintenance Supporting Data Composer (MASDAC). This system provides a convenient interface for producing and maintaining AMM revisions and

job cards. In addition to the structured display of the content, it compares multiple revisions and highlights the differences in visual form. Job cards are compiled by means of simple drag-and-drop operations. During this process, the data is automatically validated against the Air Transport Association (ATA) rules to ensure a standardized output format at all times. In the event of any changes to an AMM, the new revision can be imported and compared with the old one.

In addition, MASDAC allows previous job cards to be transferred to a new revision and automatically marks the resultant changes. Thus, it not only shortens the production process but also permits very efficient and time-saving maintenance of the



documents. This is achieved thanks to the expert combination of modern technologies and products as well as seamless integration in the Airbus Group's process and system environment.

Solution

In contrast to the previous process, job cards created using MASDAC do not have to be compiled from different documents and edited manually. For this purpose, MASDAC imports AMM data, which has been created in the SGML format, and stores the structure in a database. In this way, it is possible for unambiguous references to the source data to be stored for all elements of a job card, ensuring that changes arising from a new AMM revision are directly reflected in the job cards. Consequently, job cards compiled in accordance with the old revision are automatically updated to match the new revision, with all relevant changes displayed. MASDAC integrates the XML editor Arbortext Epic so that individual modifications can be made to the text. Thus, for example, sections or tables can be revised or new ele-

ments added. Epic has been supplemented with the addition of special style sheets showing the content in formatted form, thus ensuring that users are able to edit XML data as intuitively as possible. As well as this, MASDAC allows external graphs to be integrated in the job card for illustration purposes.

After completion, the job cards are released to the customer as Microsoft Word files. For this purpose, MASDAC features a mechanism for converting the ATA-XML-based content of the job cards into RTF files.

The upshot of all this is that Acando has created a modern technical documentation solution for and with Airbus rendering the production and maintenance of ATA-based documents substantially easier and more transparent. In this way, Airbus not only saves time and money but can also serve its customers more quickly.

Technology:

- Microsoft .NET
- Oracle 10g Database
- Arbortext Epic XML Editor

Contact:

Acando GmbH
Millerntorplatz 1
20359 Hamburg
Tel. +49 40 82 22 59-0
Fax +49 40 82 22 59-100
Email: info@acando.de
<http://www.acando.de>

